



CYST NEMATODE

EXTRACTION TECHNIQUES

Sedentary soil nematodes

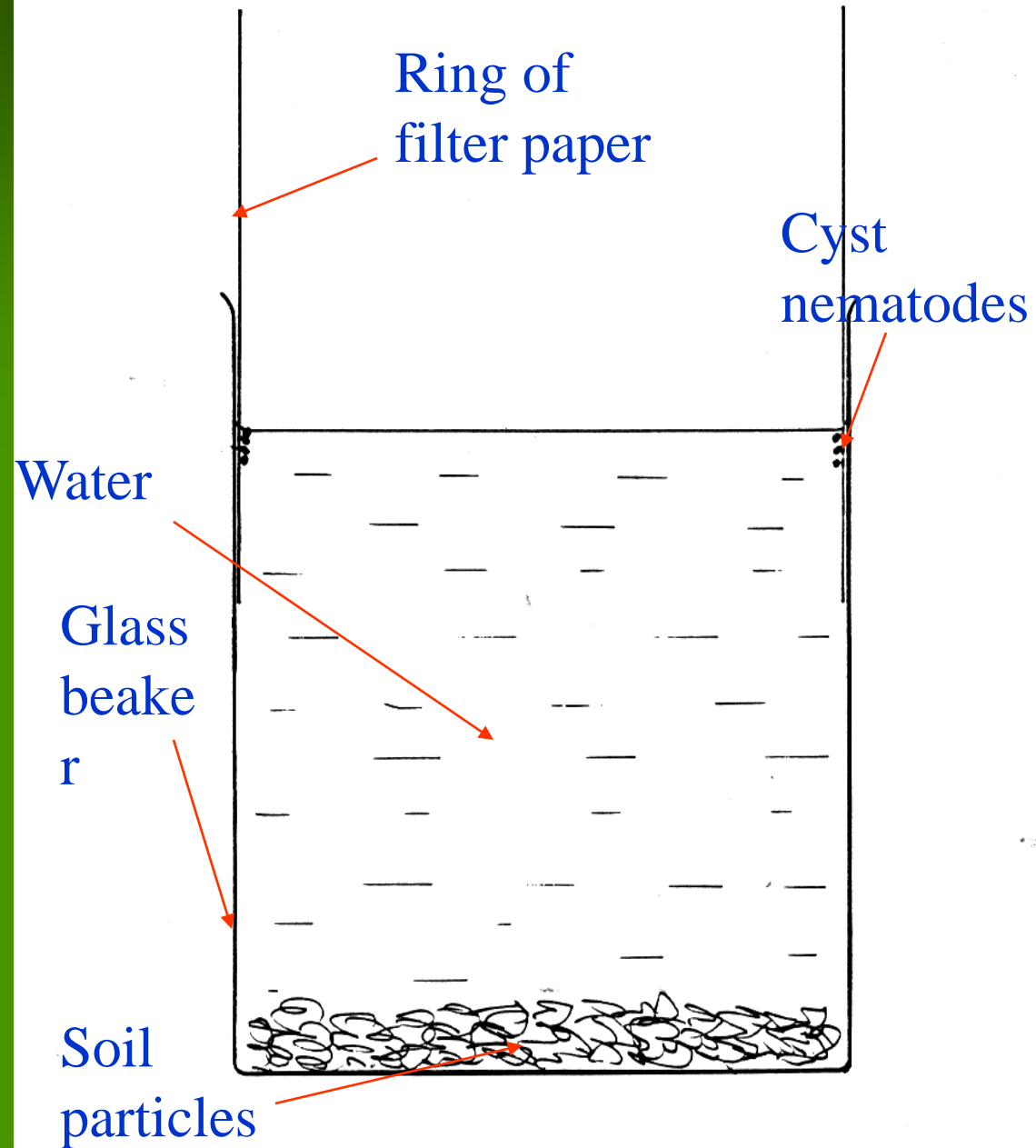
e.g. *Globodera* spp.

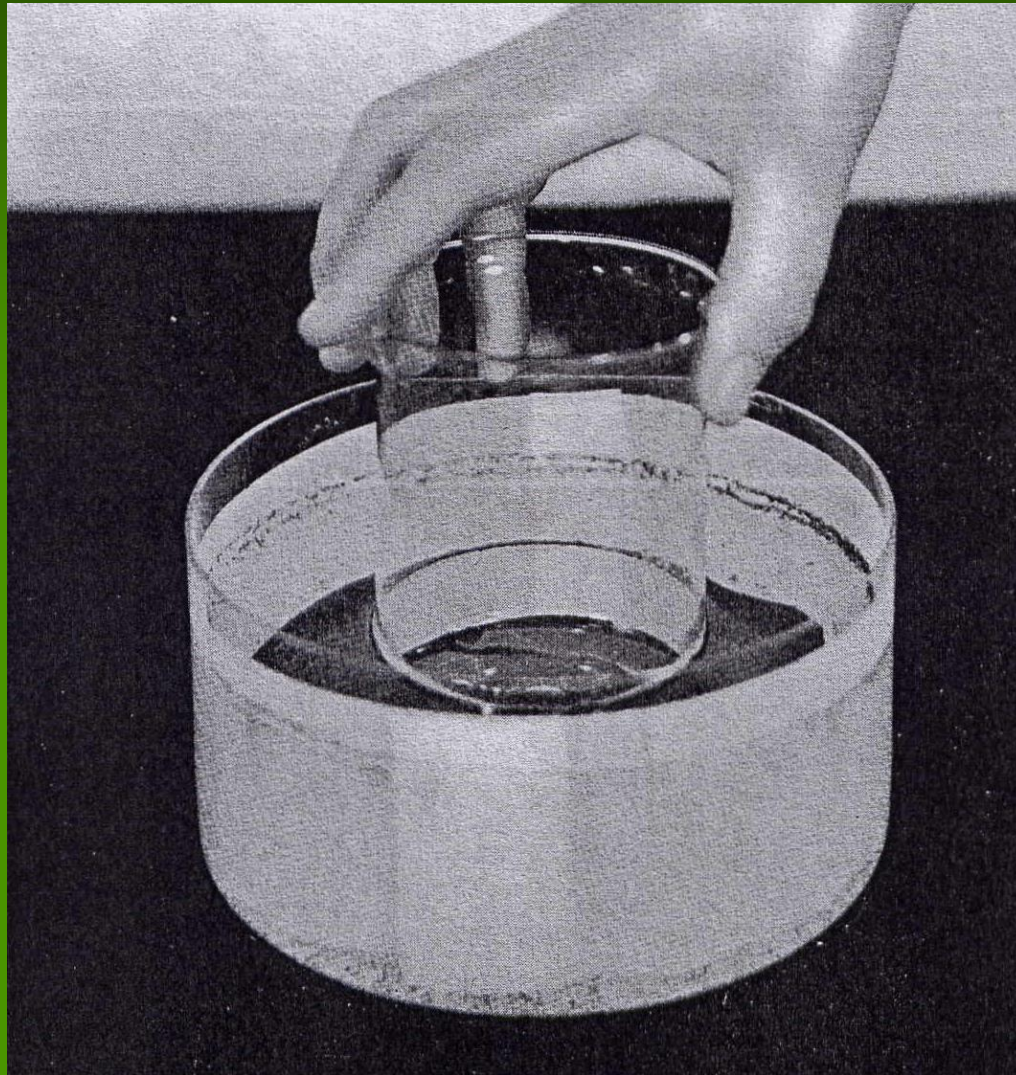
Heterodera spp.

Sedentary soil nematodes

1. Beaker / filter paper (Buhr method)
2. Flask Method
3. Seinhorst Elutriator

Beaker/Buhr method





Pushing beaker into water to move cysts up on filterpaper

Flask Method



1. Prepared sample & equipment

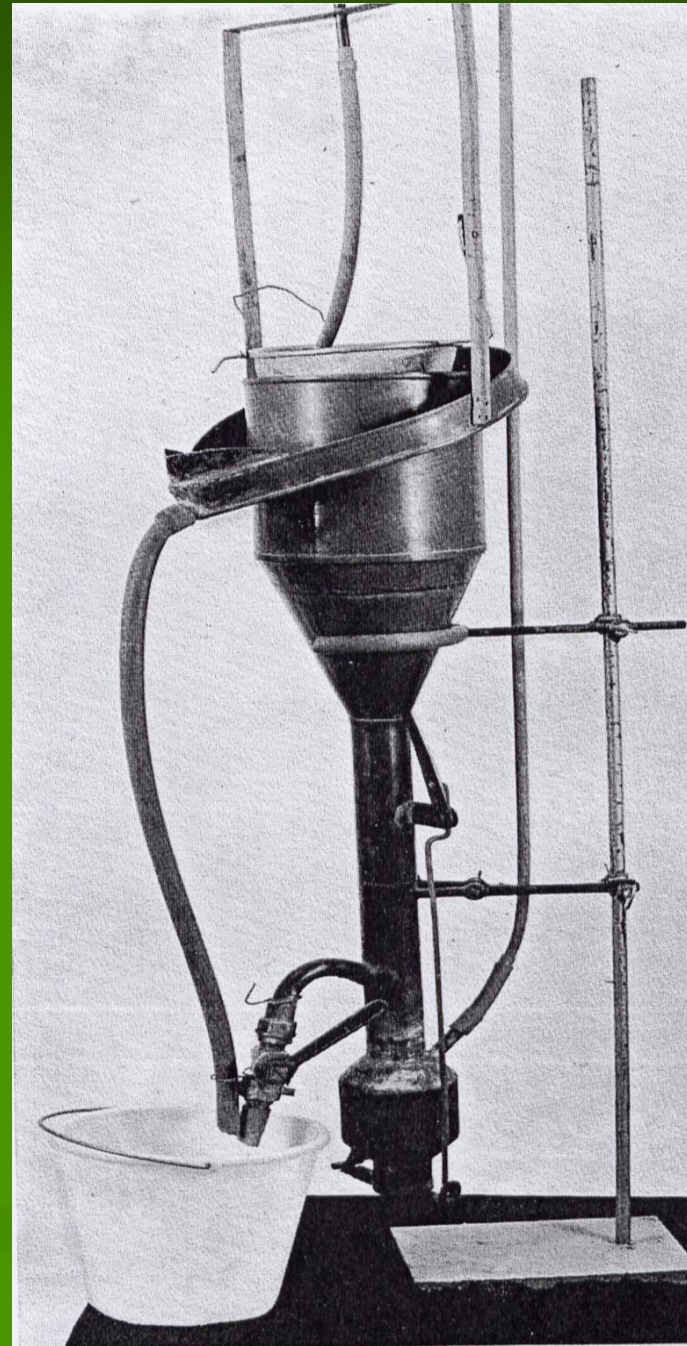
2. Extract



3. Decanting



Original Seinhorst elutriator (1964)



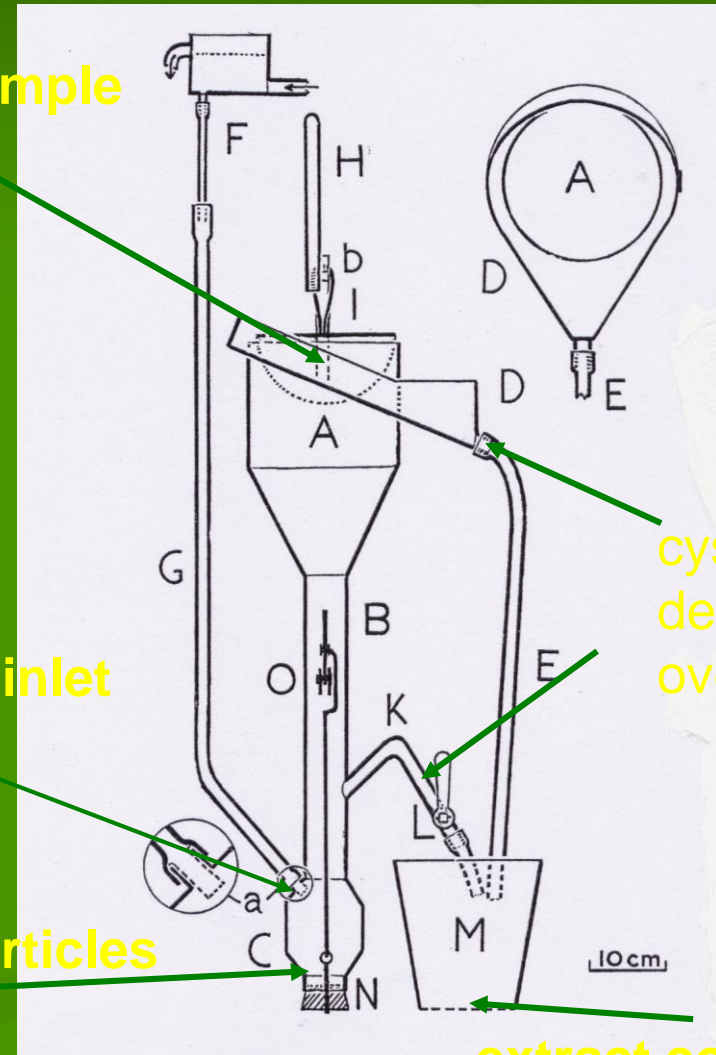
Standard Seinhorst (Poland)



soil sample

water inlet

soil particles



cyst & debris overflow

extract collection

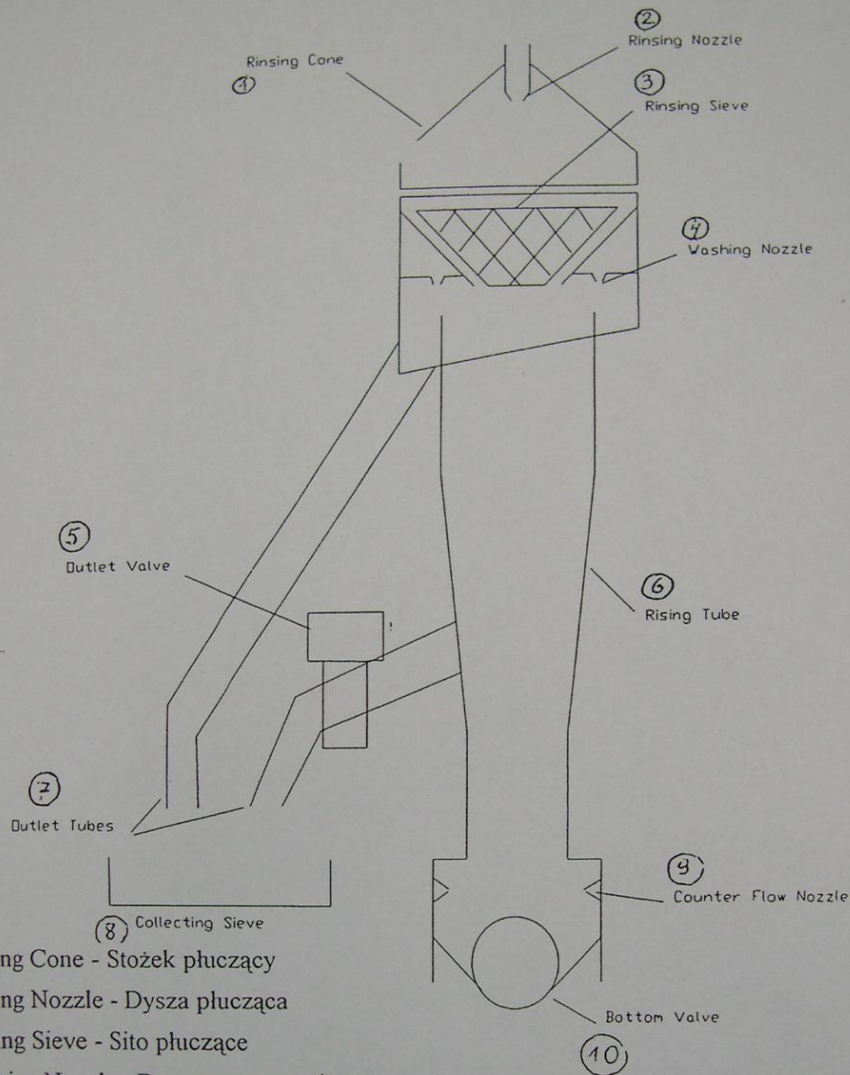
Simplified Seinhorst (Poland)



Soil sample Extractor (Meku)



Notation of Functional Parts



1. Rinsing Cone - Stożek płuczący
2. Rinsing Nozzle - Dysza płucząca
3. Rinsing Sieve - Sito płuczące
4. Washing Nozzle - Dysza przemywająca
5. Outlet Valve - Zawór wylotowy
6. Rising Tube - Rrura pionowa do przemywania
7. Outlet Tubes - Rury wylotowe
8. Collecting Sieve - Sito zbierające
9. Counter Flow Nozzle - Dysza przeciwpływu
10. Bottom Valve - Zawór denny

Soil sample Extractor

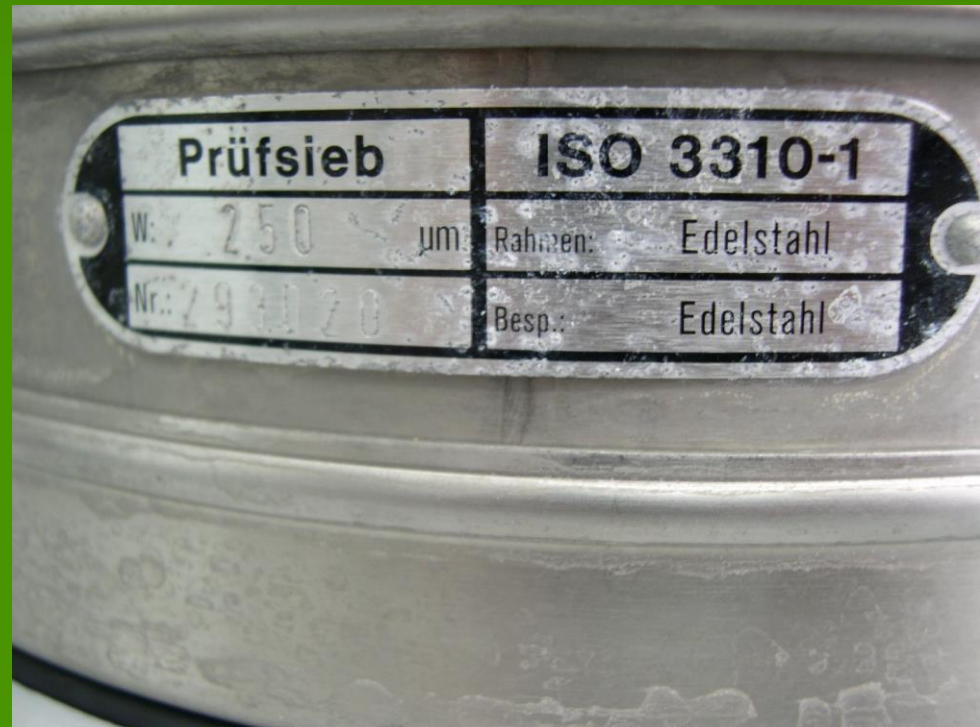
Control panel



High pressure rinsing pump / water filters



Rinsing process / collecting sieve



Installation of the Device (bath / setter)



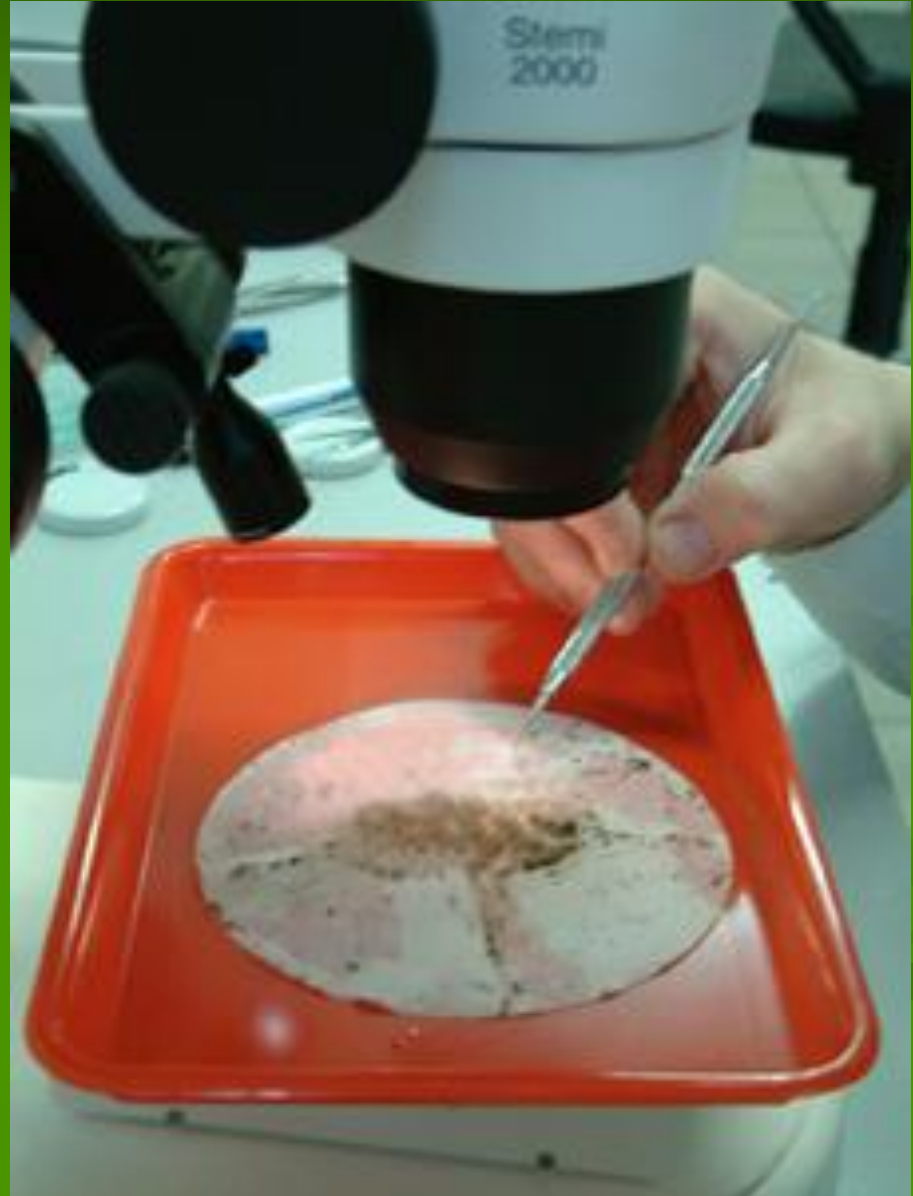
Collected debris on sieve



Microscope examination of float (on sieve)



Microscope examination of float (on paper filter)



Extracted cysts



Globodera

Heterodera

Punctodera

Eggs & juveniles

