

STUDY CASE

RASPBERRY RINGSPORT VIRUS FOUND IN A NURSERY IN BiH

Jacek Żandarski

Sarajevo, 7-8 December, 2016

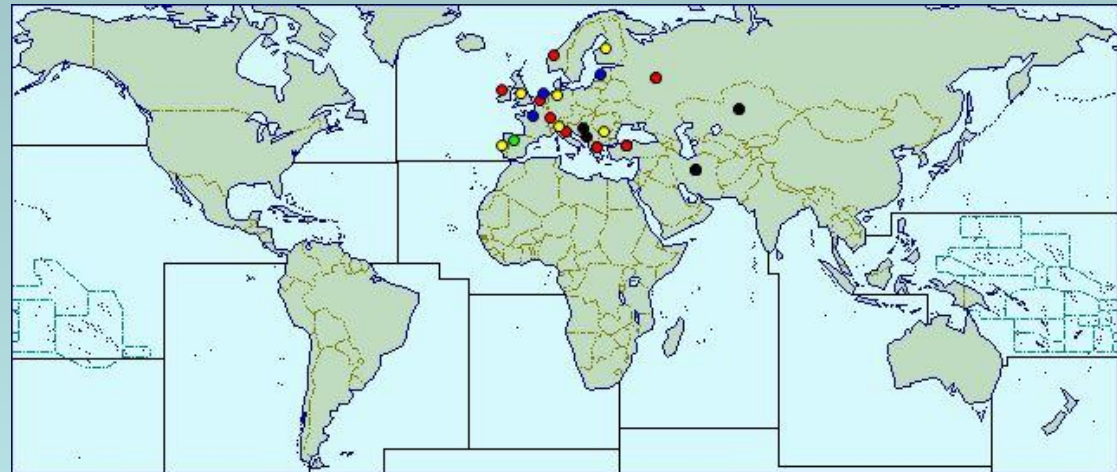
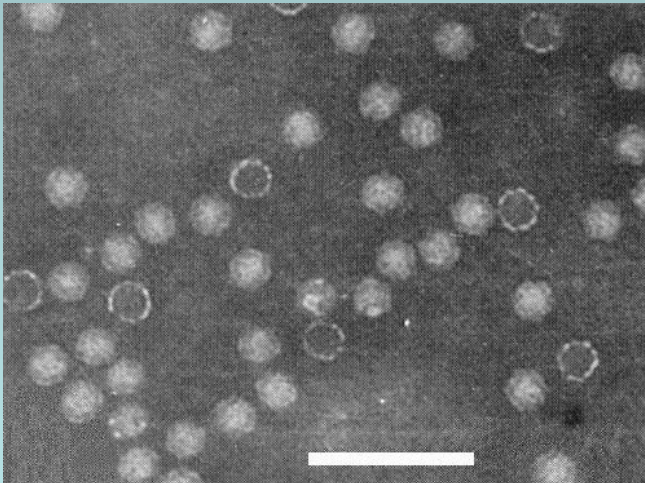
Content

- What is *Raspberry ringspot virus*?
- Range of host plants
- Means of local movement
- Means of dispersal
- Scenario of a possible crisis situation



What is *Raspberry ringspot virus*?

- It is a virus that belongs to the family of Nepoviruses – its particles are isometric, about 28 nm in diameter
- Typical symptoms are: chlorotic ring spot; yellowish-green spots; oak-leaf pattern; chlorotic blotches and a net-like chlorosis along the smaller veins
- The virus has been reported from a number of European countries, but no significant losses were notified



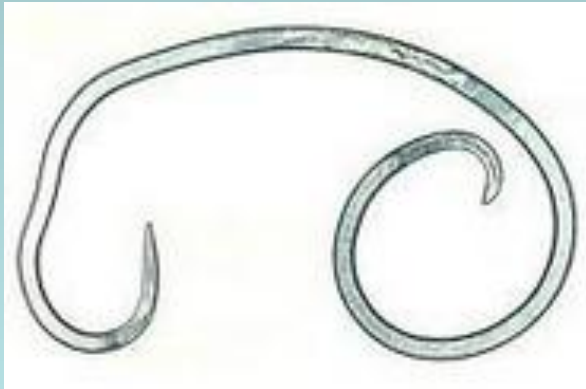
Range of host plants

- The main host is raspberries (*Rubus* spp.)
- The virus also affects a number of other plants, such as: strawberries, cherries, gooseberries, grapes and red currants



Means of local movement

- RRSV is transmitted by some species of the nematode genus *Longidorus* (e.g. *L. elongatus*)
- Both larvae and adults transmit the virus, but the adult does not pass the virus to its progeny, nor is it retained when the nematode moults
- Short-range dispersal occurs by means of transmission by viruliferous nematodes from plant to plant and, to a more limited extent, by the movement of the nematodes themselves



Means of dispersal

- On longer distances, the virus can be carried in infected plants or their parts of plants, including seeds
- RRSV might also be present in viruliferous nematodes or infected seeds in the soil accompanying consignments of plants



Possible scenario

- Nursery in BiH involved in production of rooted berry plants (*Rubus*, *Ribes*, *Fragaria*, etc.);
- Stocks of mother plants are in place
- Symptoms of RRSV-like found on some seedlings of *Rubus*, during routine plant health inspection, in a few locations
- So far the supervision by plant health inspectors was only visual examination of all plants during their growth – no problems observed
- The producer sells his plants exclusively in BiH, for both bigger farmers and local small amateurs
- The producer has been running this nursery for more than 10 years now

The task for you:

To identify measures to be taken by plant health services in order to:

- Eradicate the virus from the nursery
- Recognize potential spread of the virus
- Prohibit its further potential spread



GOOD LUCK !!! 😊

